

# JumpStart<sup>®</sup> ClearFit<sup>™</sup> Dressings

Product Highlight

JumpStart dressings are exclusively powered by V.Dox<sup>®</sup> technology<sup>™</sup> to reduce the risk of infection, disrupt biofilm formation,<sup>1-3</sup> and promote keratinocyte migration.<sup>4</sup> The JumpStart ClearFit dressing integrates this advanced microcurrent technology alongside a clear film adhesive for simple application and gentle removal, contouring to various incision sizes and locations.

## Features and Benefits

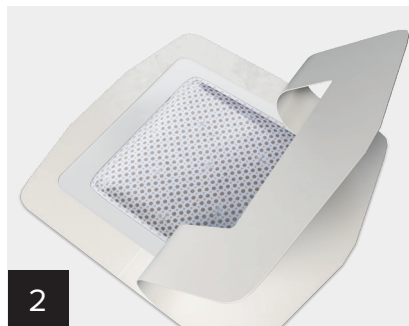
- Gentle and durable clear film adhesive layer
- Can be applied directly over sutures, staples, Steri-Strip<sup>™</sup> wound closure strips, and liquid skin adhesives
- Water-resistant
- Can be kept on for up to 7 days
- Multiple sizes for various incision lengths



## JumpStart ClearFit Dressing Application



**1** **Moisten** the dotted JumpStart pad to activate the microcell batteries.



**2** **Peel off** the paper liner to expose the adhesive and **apply** over the incision.



**3** Gently **press** the dressing down and **remove** the paper frame.

## References

1. Kim H, Makin I, Skiba J, Ho A, Housler G, Stojadinovic A, Izadjoo M. Antibacterial efficacy testing of a bioelectric wound dressing against clinical wound pathogens. *Open Microbiol J*. 2014;8:15-21. doi:10.2174/1874285801408010015
2. Banerjee J, Das Ghatak P, Roy S, et al. Silver-zinc redox-coupled electrochemical wound dressing disrupts bacterial biofilm. *PLoS One*. 2015;10(3):e0119531. doi:10.1371/journal.pone.0119531
3. Kim H, Izadjoo MJ. Antibiofilm efficacy evaluation of a bioelectric dressing in mono- and multi-species biofilms. *J Wound Care*. 2015;24(Suppl 2):S10-S14. doi:10.12968/jowc.2015.24.Sup2.S10
4. Banerjee J, Das Ghatak P, Roy S, et al. Improvement of human keratinocyte migration by a redox active bioelectric dressing. *PLoS One*. 2014;9(3):e89239. Published 2014 Mar 3. doi:10.1371/journal.pone.0089239

## Ordering Information

Product description	Item number
JumpStart ClearFit dressing, 3.5 in × 2 in	ABS-4063
JumpStart ClearFit dressing, 4 in × 4 in	ABS-4061
JumpStart ClearFit dressing, 6 in × 6 in	ABS-4062
Energel <sup>®</sup> wound hydrogel	AGL-L075-10

arthrex.com

© 2024-10 Arthrex, Inc. All rights reserved. FL1-000873-en-US\_A

