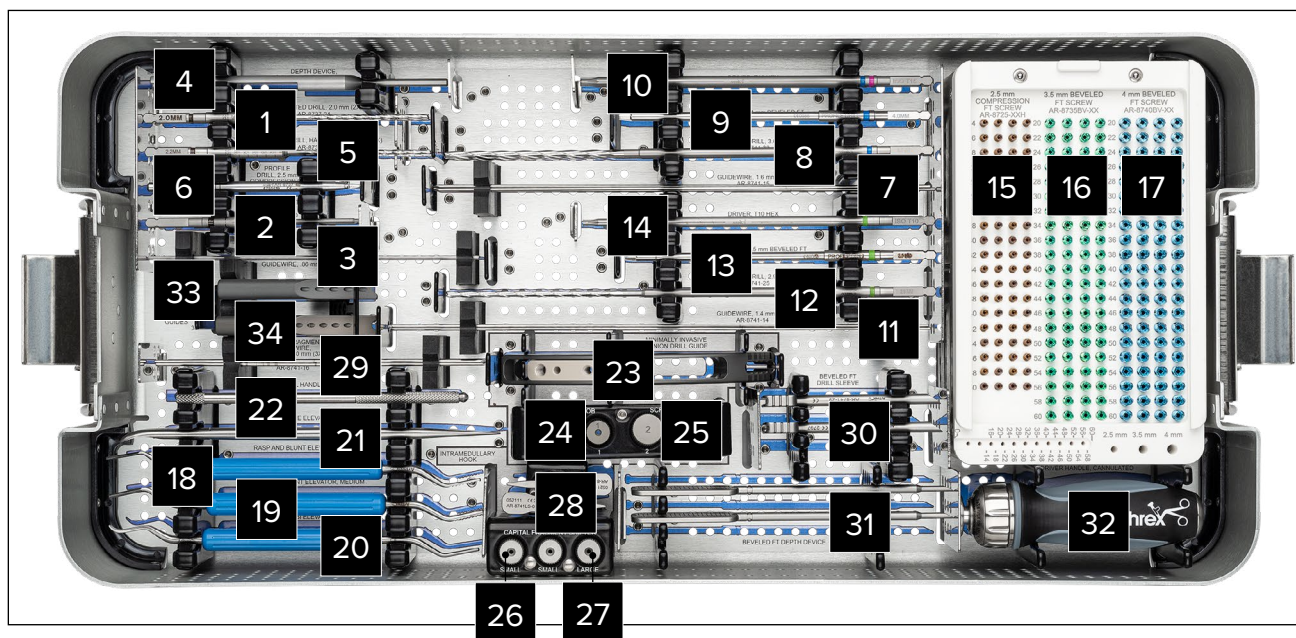


# Arthrex Minimally Invasive Bunionectomy System

AR-8741S



Pic.	Item Number	Qty.	Description
<b>Micro Compression FT™ Instrumentation</b>			
1	AR-8737-34		Drill, cannulated, 2.0 mm
2	AR-8737-37		Driver Shaft, 1.5 mm hex, cannulated
3	AR-8737-39		Guidewire, .86 mm
4	AR-8737-51		Depth Device, 2.5 mm, Compression FT
5	AR-8737-58		Drill, cannulated, hard bone, 2.2 mm
6	AR-8737-46		Profile Drill, 2.5 mm, Compression FT
<b>4.0 mm Beveled FT Instrumentation</b>			
7	AR-8741-15		Guidewire, 1.6 mm
8	AR-8741-32		Drill, cannulated, 3.6 mm
9	AR-8741-37		Profile Drill
10	AR-8741-42		Driver, T15 hexalobe
<b>3.5 mm Beveled FT Instrumentation</b>			
11	AR-8741-14		Guidewire, 1.4 mm
12	AR-8741-25		Drill, cannulated, 2.9 mm
13	AR-8741-36		Profile Drill
14	AR-8741-40		Driver, T10 hexalobe
<b>Screw Caddy</b>			
15	AR-8725-14H – 50H		Micro Compression FT™ Screws, 2.5 mm × 14 mm-50 mm
16	AR-8735BV-20 – 60		Beveled FT Screws, 3.5 mm × 20 mm-60 mm
17	AR-8740BV-20 – 60		Beveled FT Screws, 4.0 mm × 20 mm-60 mm

Pic.	Item Number	Qty.	Description
<b>MIS Instruments</b>			
18	AR-8880-01		Rasp and Blunt Elevator, small
19	AR-8880-02		Rasp and Blunt Elevator, medium
20	AR-8880-03		Combi Elevator, straight and curved ends, sharp
21	AR-8954-05		Sayre Elevator
22	3KL		Scalpel Handle, 13 cm
<b>MIS Guide Assembly</b>			
23	AR-8741G		Minimally Invasive Bunion Drill Guide
24	AR-8741G-01		K-Wire Positioning Knob
25	AR-8741G-02		Screw Positioning Knob
26	AR-8741LS-01		Capital Fragment Shifter, small
27	AR-8741LS-02		Capital Fragment Shifter, large
28	AR-8741LS-03		Intramedullary Hook
29	AR-8741-16		Guidewire, 1.6 mm, capital fragment
30	AR-8741-29		Drill Sleeve, Beveled FT
31	AR-8741-30		K-Wire Sleeve, Beveled FT
<b>Handle</b>			
32	AR-8950RH		Driver Handle, cannulated
<b>Parallel Guide</b>			
33	AR-8741G-25		Parallel Guide, 25°
34	AR-8741G-30		Parallel Guide, 30°