

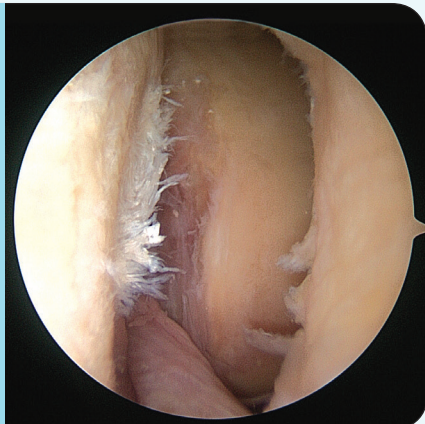
Fat Pad Retractor

Arthrex® is pleased to announce the release of the newly updated Fat Pad Retractor. The initial design of the Fat Pad Retractor was to aid in the visualization of the joint and retract soft tissues during arthroscopic procedures, without having to resect the fat pad. The Fat Pad Retractor has now been redesigned with improved materials, which allow the surgeon the option to pull tension on the device to further improve visualization. The Fat Pad Retractor is compatible with the Arthrex PassPort Button™ Cannula and is an ideal tool for creating working space when implanting BioCartilage® Cartilage Extracellular Matrix or performing other arthroscopic procedures in the knee or ankle.

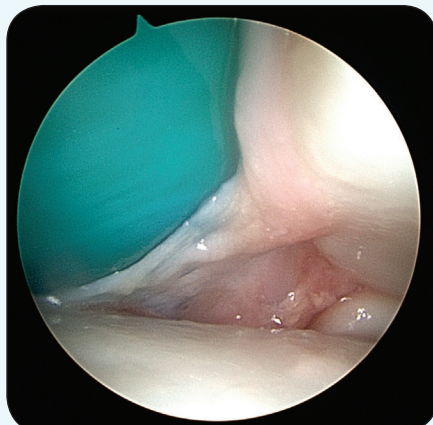
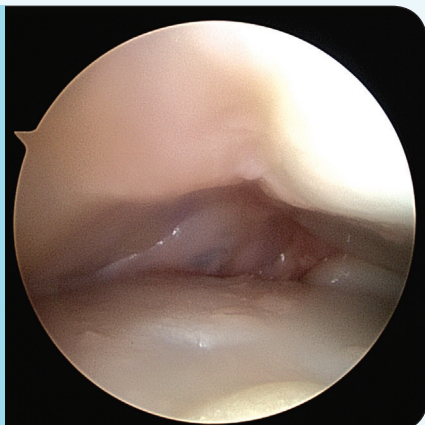


Clinical Impact

KNEE



ANKLE



Technique



Insert blunt passing needle into first portal.



Pass around fat pad and advance passing needle through second portal.



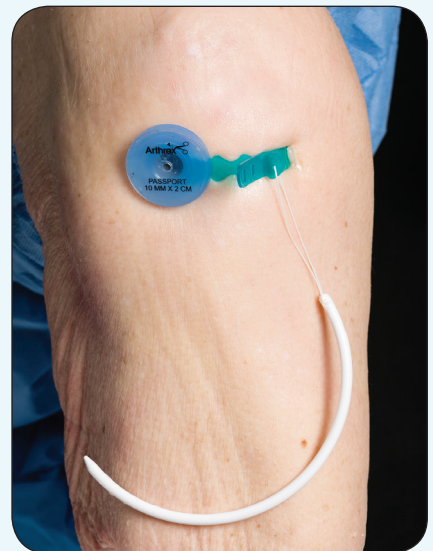
Shuttle Fat Pad Retractor into joint.



Assemble Fat Pad Retractor by advancing passing needle through desired slot in Fat Pad Retractor.



Complete assembly of Fat Pad Retractor by securing the slot and tab features to desired tension.



Insert PassPort Button™ Cannula in standard fashion and deep to Fat Pad Retractor.

To remove the Fat Pad Retractor, simply disassemble the loop and pull on the passing needle until the material is through the second portal and free from the joint. Optionally, cut the material and discard the device.

Fat Pad Retractors are available as part of the updated BioCartilage® Mixing and Delivery Kits (ABS-1000-L and ABS-1000-S) and will be sold separately (AR-6625).

Mixing and Delivery Kit, Large Joint
Mixing and Delivery Kit, Small Joint
Fat Pad Retractor, Pack of 5

ABS-1000-L
ABS-1000-S
AR-6625

Arthrex
www.arthrex.com

Orders call 1.800.934.4404

©2016, Arthrex Inc. All rights reserved. LS1-00045-EN_A