

# Hip Distraction System (HDS) Setup Instructions

Hip Arthroscopy



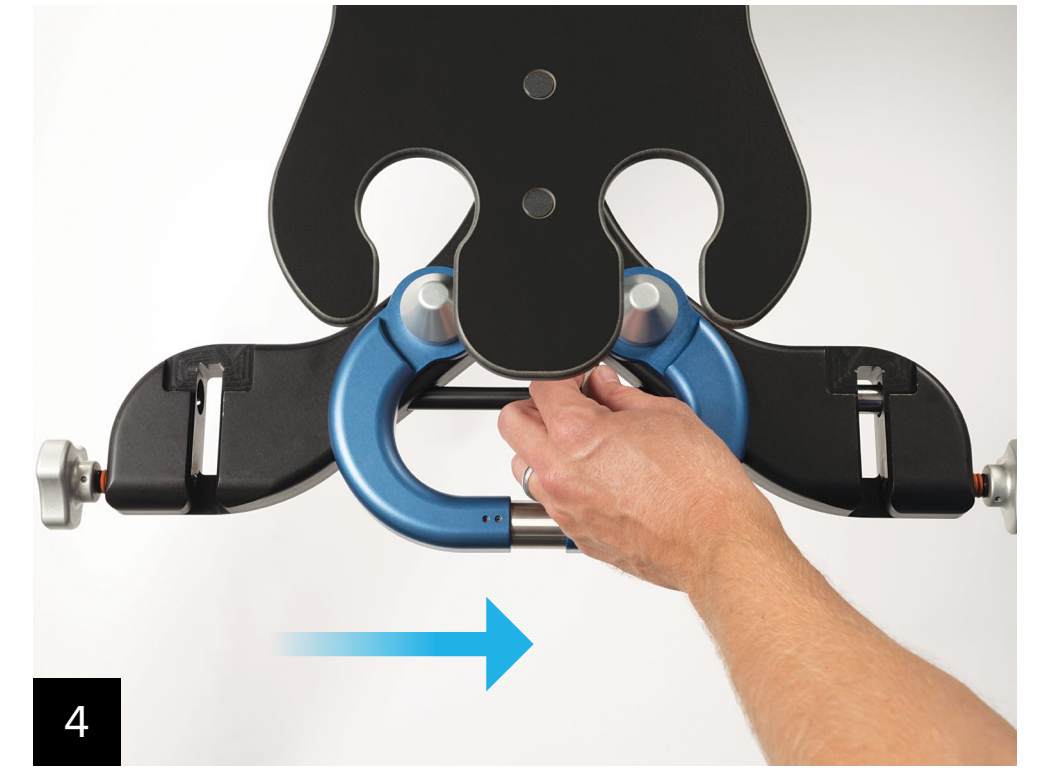
1  
Slide the appropriate HDS table clamps over the Clark railings on each side of the bed and lock them in place.



2  
Attach the HDS patient platform (AR-6529-01) to the HDS table clamps.



3  
Grasp the slot in the HDS patient platform and pull it toward the operative side.



4  
Slide the mounting pin on the HDS patient platform toward the operative side.



5  
Place the reversible HDS patient platform pad (AR-6529-02) over the HDS patient platform.



6  
Attach and lock the HDS well-leg-spar adapter (AR-6529-15) to the bottom of the HDS table clamp.



7  
Attach the HDS well leg spar (AR-6529-14) to the well-leg-spar adapter.



8  
Attach the operative leg spar (AR-6529-05) to the HDS patient platform.



8a  
**Optional:** Attach the optional HDS prep table (AR-6529-03) to the HDS patient platform.



9  
Attach the HDS perineal post (AR-6529-07) to the operative side of the patient platform.



10  
Place the reusable HDS perineal post pad (AR-6529-08) with the HDS perineal-post-pad cover (AR-6529-11) over the HDS perineal post.



10a  
**Optional:** Place the postless pad (AR-6529-22) on the OR bed and secure with the hook-and-loop fastener straps when performing a postless hip arthroscopy procedure.



11  
Attach the HDS traction boots (AR-6529-23) to both Teletrac carriages.

## HDS Traction Boot Setup Instructions



1  
Place the foot into the flexed HDS traction boot (AR-6529-23).



2  
Place the instep pad over the top of the shin and foot and insert the top strap on the boot through the ratchet on the instep pad.



3  
Tighten the ratchet down to secure the instep pad over the foot.



4  
Repeat for the other 3 ratchets on the boot. Do not overtighten the ratchets and always ensure a finger can be placed under the instep pad between the blue foam pad and the instep pad.

