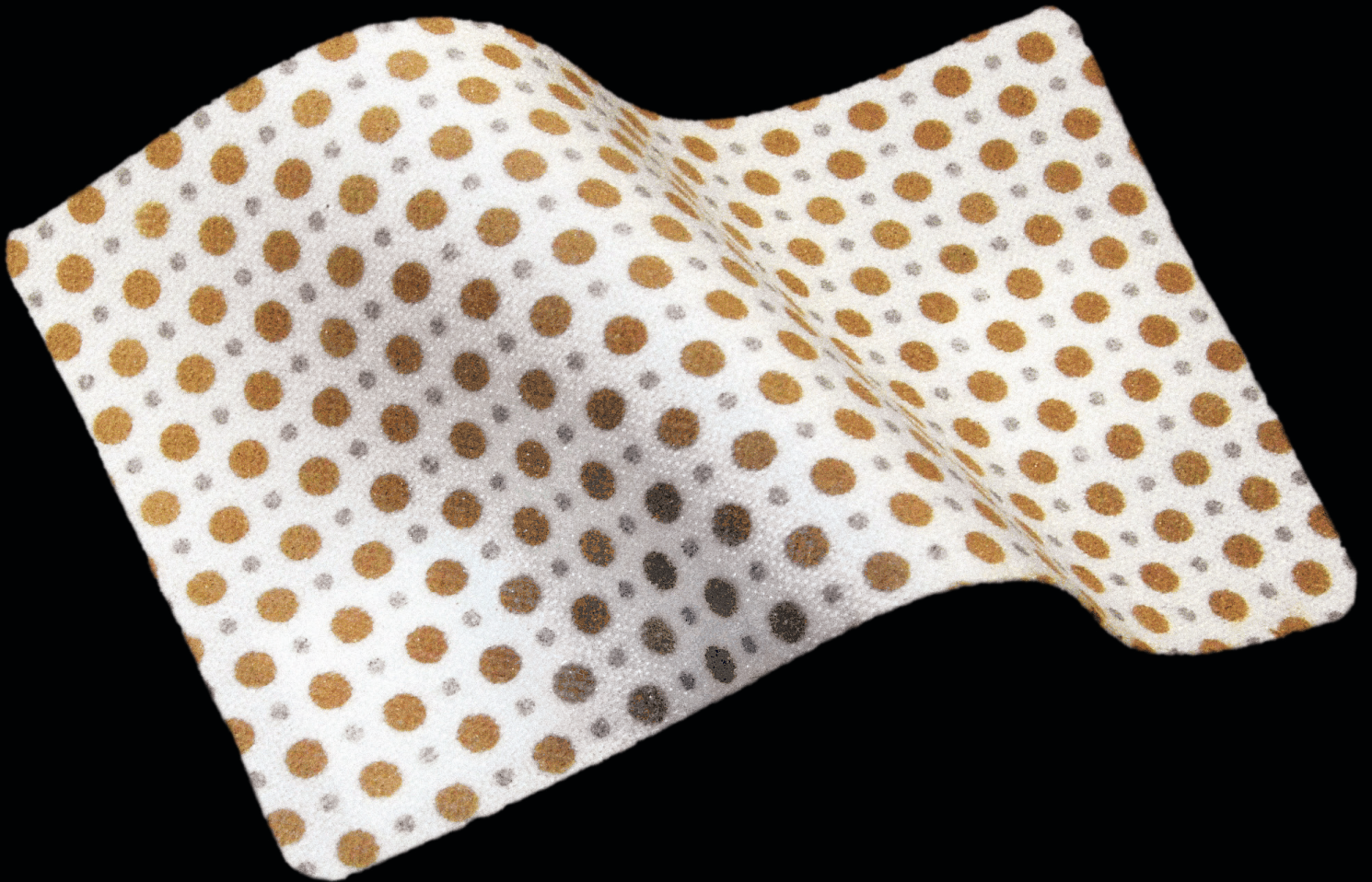


JumpStart[®]

Antibacterial Wound Dressings



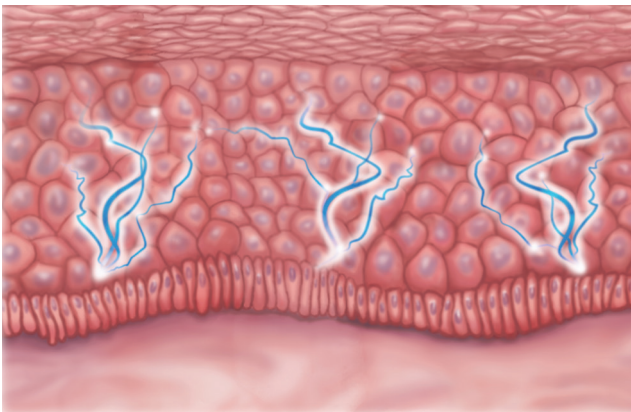
Arthrex[®] 

JumpStart® Antibacterial Wound Dressings

Product Features

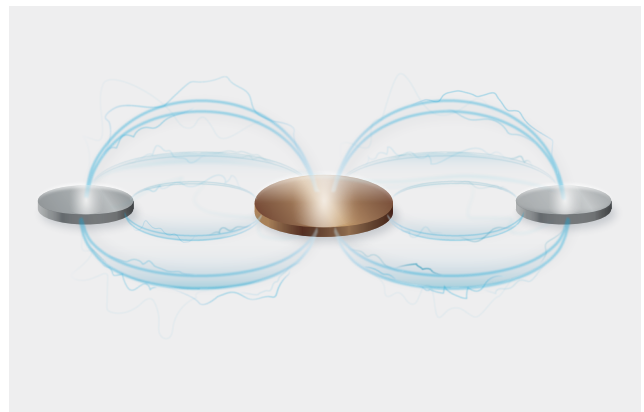
JumpStart dressings are provided on an ultra-thin, lightweight, polyester substrate and contain laser-cut fenestrations to allow easy passage of wound exudate into the absorbent layer or a secondary dressing. The flexible design easily contours to the body. JumpStart dressings may be applied directly over sutures, staples, Steri-Strip™ wound closure strips, and liquid skin adhesives. The dot-matrix pattern of embedded microcell batteries generates microcurrents on the dressing surface in the presence of a conductive medium, such as sterile saline, water-based gel, or wound exudate.

A New Generation of Wound Care Solutions



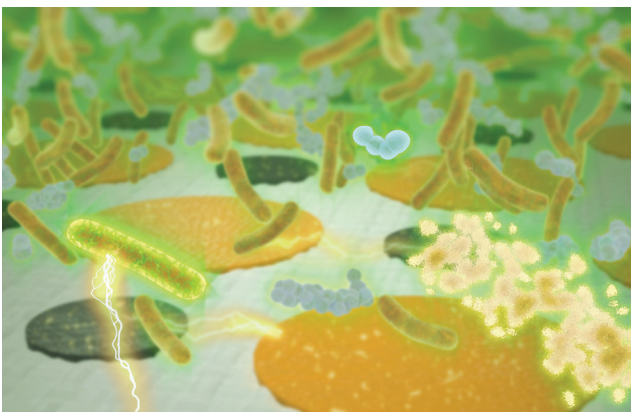
Inspired by the body.

The skin naturally creates and uses electrical energy to promote healing. Electric fields in the skin create surface energy potential, known as transepithelial potential (TEP). When skin is wounded, a change in electric potential occurs, which drives the cell migration and wound healing processes.



Powered by electricity.

JumpStart antibacterial wound dressings—powered by patented V.Dox™ technology—employ moisture-activated microcell batteries that wirelessly generate microcurrents designed to mimic the skin's electrical energy.



Energized by results.

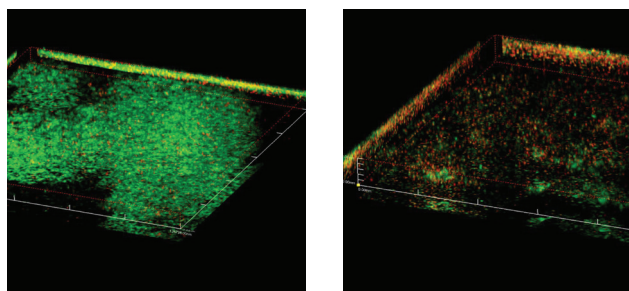
JumpStart dressings reduce the risk of infection by killing a broad spectrum of bacteria without antibiotics while supporting the body's natural healing process.

Steri-Strips is a trademark of 3M.

Published studies show JumpStart® dressings reduce the risk of infection¹⁻⁵ and promote the healing process⁶ to optimize outcomes.

Reduce the risk of infection

- Killed a broad spectrum of pathogens, including multidrug-resistant and biofilm-forming bacteria¹⁻³
- Disrupted existing biofilm infection and prevented biofilm from forming in preclinical studies⁴
- Prevented bacterial growth, with sustained antimicrobial impact for up to 7 days⁵
- Demonstrated electricidal antimicrobial impact vs silver dressings²

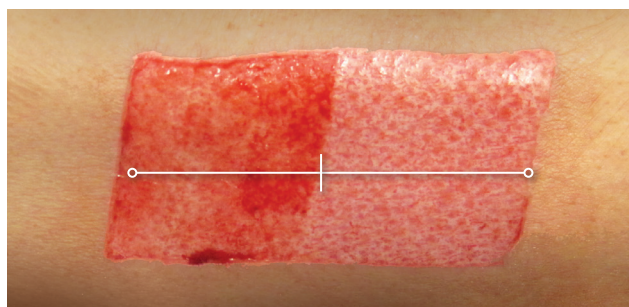


Live/dead fluorescence staining demonstrated bacterial killing of *P aeruginosa* within JumpStart antimicrobial wound dressing compared to a standard silver-based dressing at 24 hours. Green = alive, red = dead

Promote healing

- Improved re-epithelialization with JumpStart dressings vs standard dressings⁶

One Week Post-op



In a prospective case series, 6 skin graft harvest sites (N = 13) demonstrated significantly greater re-epithelialization with JumpStart dressing (71.8%) vs control (46.9%) (P = .015).

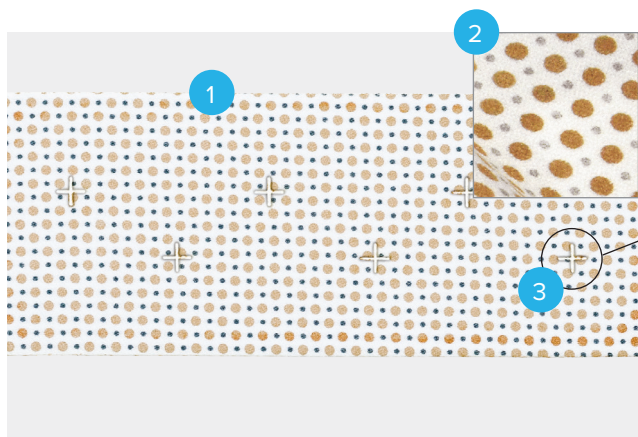
Energel® Wound Hydrogel

Use Energel wound hydrogel to activate the JumpStart® dressing's microcell batteries:

- Sterile, water-soluble gel formulated to maintain a moist wound environment and provide moisture to a dry wound
- Double-packaged and sterile for use in the operating room
- Optimally sized for single use (7.5 g)
- Maintains JumpStart dressing's conductivity for up to 7 days



JumpStart® Contact-Layer Dressing

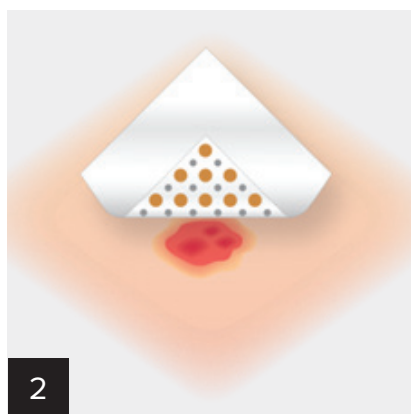


1. JumpStart antimicrobial wound contact-layer powered by V.Dox™ technology
2. Polyester substrate with embedded microcell batteries made of elemental silver and elemental zinc
3. Fenestrations allow wound drainage to pass through dressing to absorbent layer

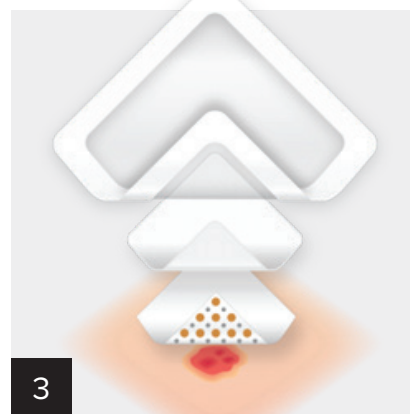
Single-Layer Dressing Application



Moisten dotted side of dressing with sterile saline, water, or Energel wound hydrogel.

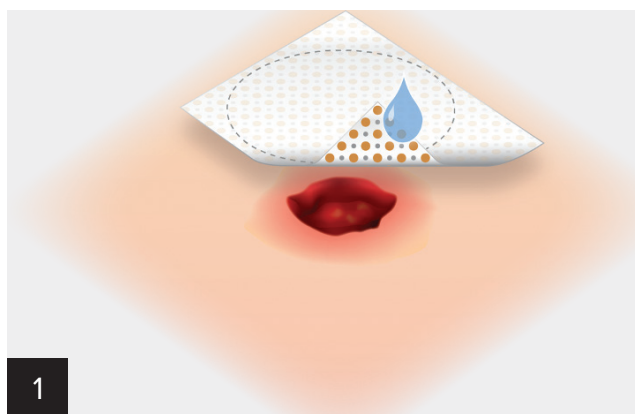


Apply, dots down, onto wound surface.



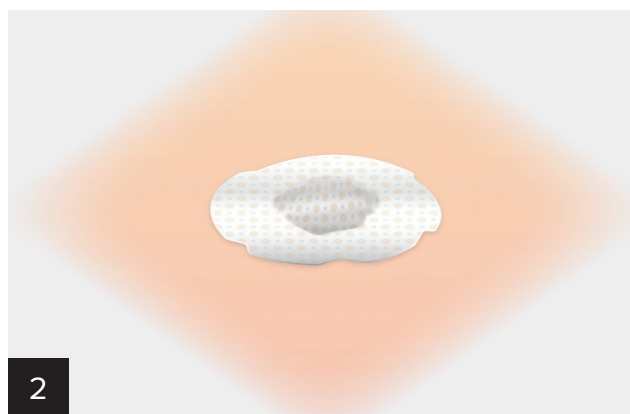
Cover with secondary dressing(s) appropriate for drainage levels.

Deep-Wound Dressing Application



Hydrate dotted side of dressing with sterile saline, water, or water-based hydrogel.

Note: If desired, trim to size and shape prior to moistening (include 1 cm to 2 cm overlap of wound edge).



Apply, dots down, onto wound surface.

Note: Completely line deep wound and extend 1 cm to 2 cm beyond wound edges.



3

Fill "dead space" with gauze.

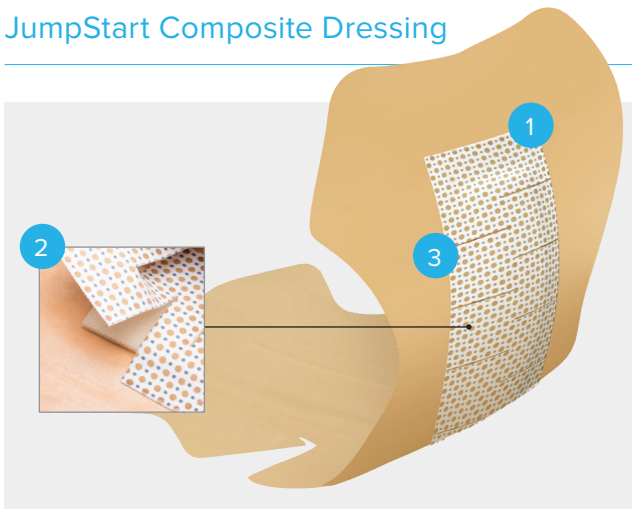
Note: If desired, moisten gauze to keep JumpStart® dressing moist.



4

Cover with secondary dressing(s) appropriate for drainage levels.

JumpStart Composite Dressing



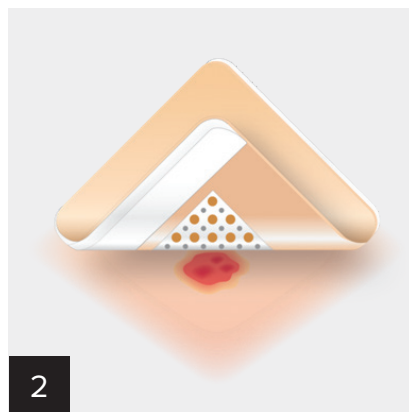
1. JumpStart antibacterial wound contact-layer powered by V.Dox™ technology
2. Polyester substrate with embedded microcell batteries made of elemental silver and elemental zinc
3. Fenestrations allow wound drainage to pass through dressing to absorbent layer

Composite Dressing Application



1

Remove center liner and **moisten** dotted pad with sterile saline, water, or water-based hydrogel.



2

Apply, dots down, onto wound surface.

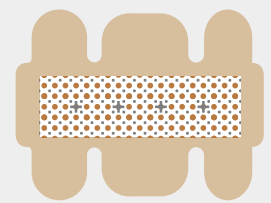

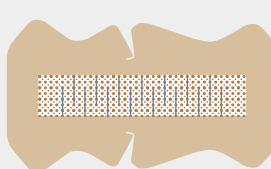
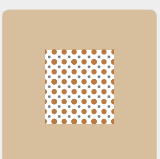
Note: If dressing a joint, apply while joint is in slight flexion.

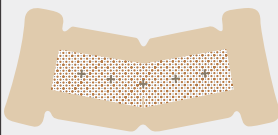
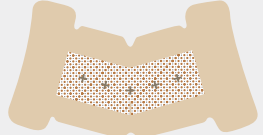

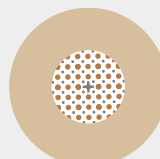


3

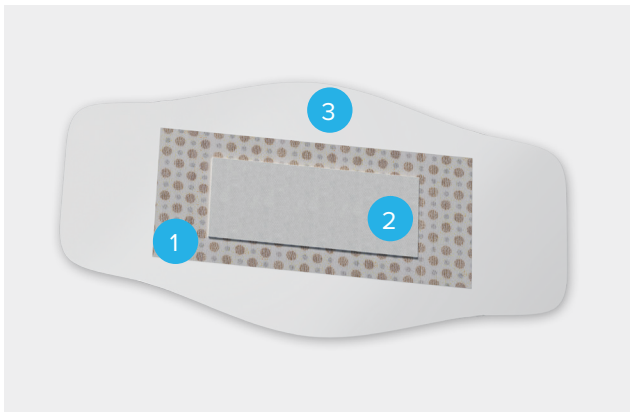
Remove remaining liners and **smooth** adhesive over skin.

JumpStart® Composite Dressing Types

Product Description	Product Image	Item Number
Foot, ankle, and shoulder dressing		ABS-4051
Direct anterior hip arthroplasty dressing		ABS-4052
Hip and knee arthroplasty dressing		ABS-4050
Partial- and full-thickness dressing		ABS-4053

Product Description	Product Image	Item Number
Total shoulder arthroplasty dressing		ABS-4057
Medial/lateral elbow dressing		ABS-4058
2.5-in diameter scope-site dressing		ABS-4054
4-in diameter scope-site dressing		ABS-4056

JumpStart® ClearFit™ Dressing



1. JumpStart antimicrobial wound contact-layer powered by V.Dox technology
2. Highly absorbent middle layer
3. Gentle transparent film adhesive acts as an antimicrobial barrier

JumpStart ClearFit Dressing Application



Moisten the dotted JumpStart pad to activate the batteries.

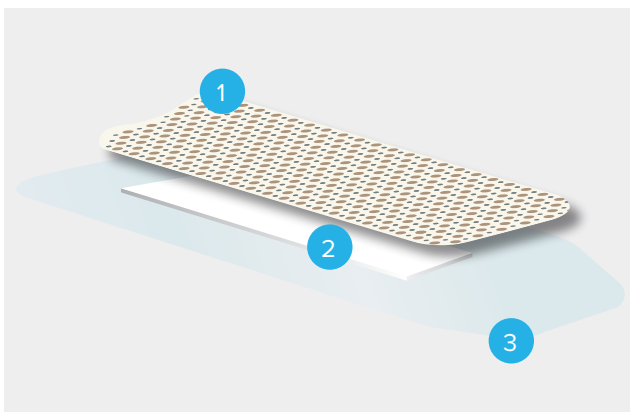


Peel off the paper liner to expose the adhesive and **apply** to the site.



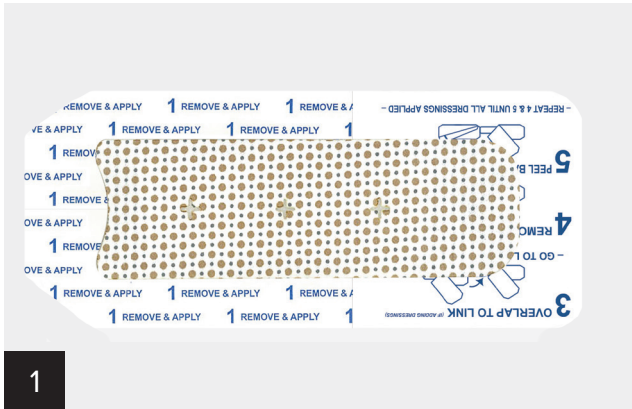
Gently **press** the dressing down and **remove** the paper frame.

JumpStart FlexEFit® Dressing

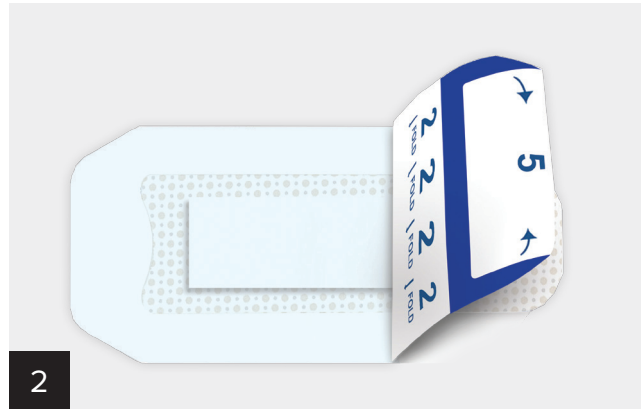


1. JumpStart antimicrobial wound contact-layer powered by V.Dox technology
2. Highly absorbent middle layer
3. Gentle transparent film adhesive acts as an antimicrobial barrier

JumpStart® FlexEFit® Dressing Application

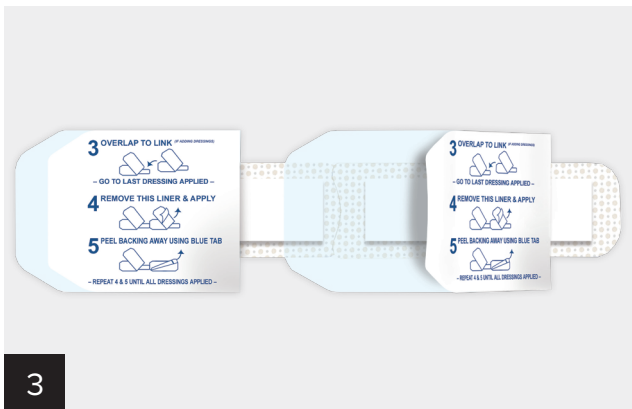


Remove #1 liners and apply, pressing gently to ensure direct contact of JumpStart pad with the wound bed.

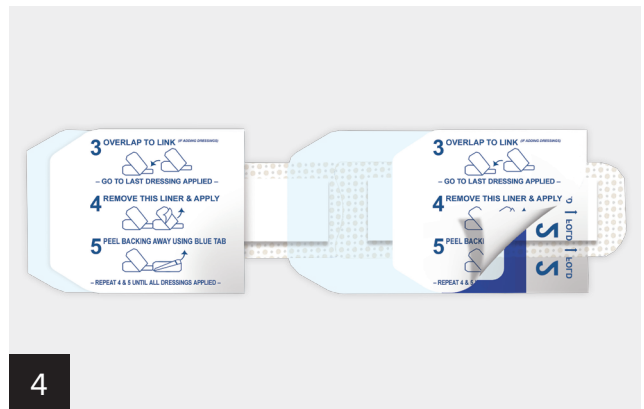


Fold back #2 panel.

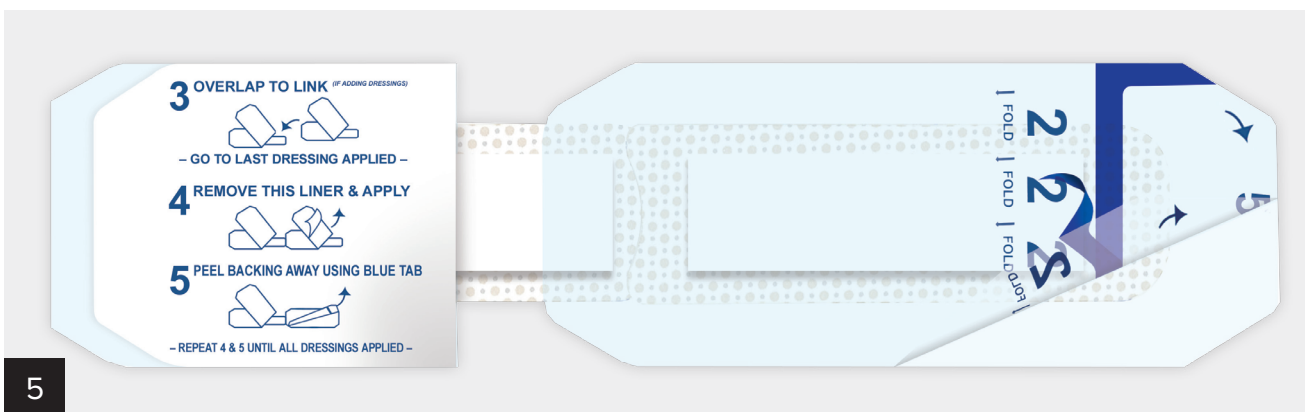
Note: Do not remove liner.



If additional JumpStart FlexEFit dressings are needed, repeat steps 1 and 2 to add one dressing at a time until the wound incision is covered. Then go to the last dressing applied.



Remove instructional liner and place dressing on skin. Gently press and rub adhesive to firmly adhere.

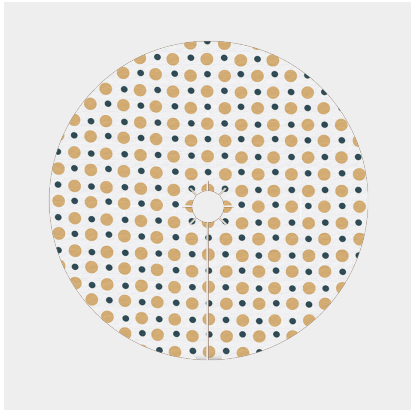


Pull either blue tab toward the other to remove backing. Repeat steps 4 and 5 to complete application of each dressing. Continue repeating these steps until all dressings are applied.

JumpStart® Pin Site Kit

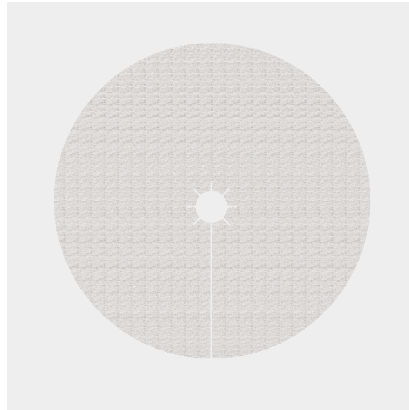
The JumpStart pin site kit is sized to fit around external fixation devices to protect against a broad spectrum of bacteria and promote the natural healing process. The absorbent disk and holding clip help maintain a moist wound environment, which is optimal for healing when using JumpStart dressing.

Kit Components



JumpStart Antimicrobial Wound Dressing

Broad-spectrum antimicrobial wound contact layer



Absorbent Disk

Polyester-based absorbent layer



Polyester-Based Absorbent Layer Holding Clip

Keeps the dressings in place and helps maintain a moist wound environment (Compatible with 4, 5, 6 mm pins)

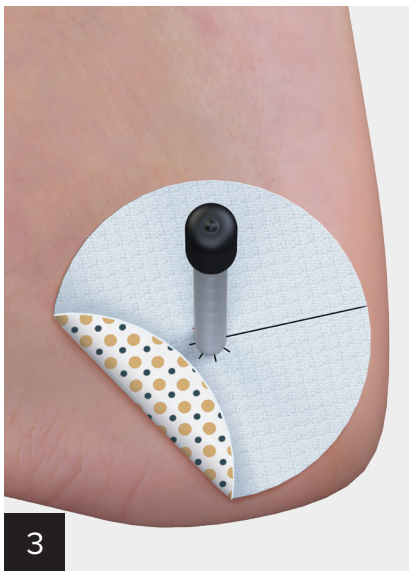
Pin Site Application



Cleanse the pin site area with an appropriate wound cleanser according to local clinical protocol.



Moisten the dotted JumpStart dressing with sterile saline, water, or a thin, even layer of Energel® wound hydrogel (not included in kit).



3

Cleanse the pin site area with an appropriate wound cleanser according to local clinical protocol.



4

Position the absorbent disk on top of the JumpStart® dressing that was placed around pin site. Ensure slit of absorbent pad is placed opposite the slit on the JumpStart dressing.



5

Slide the holding clip onto the pin. Push clip down to apply gentle compression and secure the dressings in place.

Post-Application Care and Dressing Changes

- JumpStart® dressing may be left in place for up to 7 days
 - Earlier and/or more frequent dressing changes may be required, depending on the amount of exudate present and the condition of the wound and/or the surrounding skin. Inspect the wound site periodically.
 - To remove JumpStart dressing, gently pull back. If it adheres to the wound surface, do not force it off; moisten or soak the dressing with sterile saline or water until it can be removed without tissue disruption.
- JumpStart wound dressings with V.Dox™ technology are versatile and usable as an adjunct to multiple advanced wound care therapies such as:
- Directly over sutures, Steri-Strip bandages, staples, and liquid skin adhesives
 - In case studies, JumpStart dressings have been used with bioengineered skin substitutes and negative-pressure wound therapy^{1,2}

Ordering Information

JumpStart® Contact-Layer Dressing

Product Description	Qty/Box	Item Number
1 in × 1 in fenestrated	10	ABS-4001
1.5 in × 8 in	10	ABS-4005
1.5 in × 10 in	10	ABS-4006
2 in × 2 in	10	ABS-4002
2 in × 5 in	10	ABS-4025
3 in × 3 in	10	ABS-4003
4 in × 4 in	10	ABS-4004
8 in × 8 in	1	ABS-4008
12 in × 12 in	1	ABS-4012

JumpStart Composite Dressing

Product Description		Qty/Box	Item Number
Adhesive Size	Dressing Size		
2.5 in	1 in	10	ABS-4054
4 in	2 in	10	ABS-4056
4.4 in × 9.6 in	1.5 in × 6.5 in	5	ABS-4057
4.2 in × 7.5 in	1.4 in × 4.5 in	5	ABS-4058
4 in × 4 in	2 in × 2 in	5	ABS-4053
5 in × 6 in	1.5 in × 5 in	5	ABS-4051
4.5 in × 10 in	1.5 in × 7 in	5	ABS-4052
6 in × 11.5 in	2 in × 9 in	5	ABS-4050

JumpStart ClearFit™ Wound Dressing

Product Description	Item Number
4 in × 4 in	ABS-4061
6 in × 6 in	ABS-4062
3.5 in × 2 in	ABS-4063

JumpStart FlexEfit® Wound Dressing

Product Description		Qty/Box	Item Number
Adhesive Size	Dressing Size		
2.5 in × 6.3 in	1.5 in × 4.5 in	5	ABS-4060-05
		10	ABS-4060-10

Energel® Wound Hydrogel

Product Description	Qty/Box	Item Number
Energel Wound Hydrogel	10 (sterile)	AGL-L075-10

JumpStart® Pin Site Dressing Kit (ABS-4059)

Product Description	Qty/Box
JumpStart antimicrobial wound dressing	5
Absorbent disk	5
Holding clip (compatible with 4, 5, 6 mm pins)	5

To order, please call **(800) 934-4404**. Contact your local Arthrex Technology Consultant for additional information.

References

- Kim H, Makin I, Skiba J, Ho A, Housler G, Stojadinovic A, Izadjoo M. Antibacterial efficacy testing of a bioelectric wound dressing against clinical wound pathogens. *Open Microbiol J*. 2014;8:15-21. doi:10.2174/1874285801408010015
- Banerjee J, Das Ghatak P, Roy S, et al. Silver-zinc redox-coupled electrochemical wound dressing disrupts bacterial biofilm. *PLoS One*. 2015;10(3):e0119531. doi:10.1371/journal.pone.0119531
- Kim H, Izadjoo MJ. Antibiofilm efficacy evaluation of a bioelectric dressing in mono- and multi-species biofilms. *J Wound Care*. 2015;24(Suppl 2):S10-S14. doi:10.12968/jowc.2015.24.Sup2.S10
- Barki KG, Das A, Dixith S, et al. Electric field based dressing disrupts mixed-species bacterial biofilm infection and restores functional wound healing. *Ann Surg*. 2019;269(4):756-766. doi:10.1097/SLA.0000000000002504
- Vomaris Wound Care, Inc., Data on file (SLM090512CMC01F). Fountain Hills, AZ.
- Blount AL, Foster S, Rapp DA, Wilcox R. The use of bioelectric dressings in skin graft harvest sites: a prospective case series. *J Burn Care Res*. 2012;33(3):354-357. doi:10.1097/BCR.0b013e31823356e4

V.Dox technology, FlexEfit, and “Inspired by the body. Powered by electricity.” Energelized by results.” are registered trademarks of Vomaris Wound Care, Inc.



This description of technique is provided as an educational tool and clinical aid to assist properly licensed medical professionals in the usage of specific Arthrex products. As part of this professional usage, the medical professional must use their professional judgment in making any final determinations in product usage and technique. In doing so, the medical professional should rely on their own training and experience, and should conduct a thorough review of pertinent medical literature and the product's directions for use. Postoperative management is patient-specific and dependent on the treating professional's assessment. Individual results will vary and not all patients will experience the same postoperative activity level or outcomes.

arthrex.com

© 2024-10 Arthrex Inc. All rights reserved. LB1-00001-EN_L



Arthrex manufacturer,
authorized representative,
and importer information
(Arthrex eIFUs)



US patent information