

Articular Cartilage Repair

Biologic Algorithm

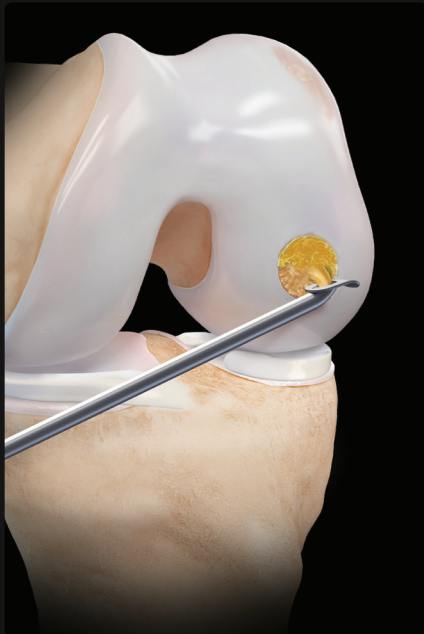
AutoCart™ Technique

DETAILS

- Small, contained lesions with minimal subchondral bone damage
- ≤2 cm² in knee; ≤1.5 cm² in ankle
- Autologous chondrocytes harvested using the GraftNet™ device

TECHNIQUE

- Single-stage, arthroscopic technique
- Kits available for knee, hip, and talus



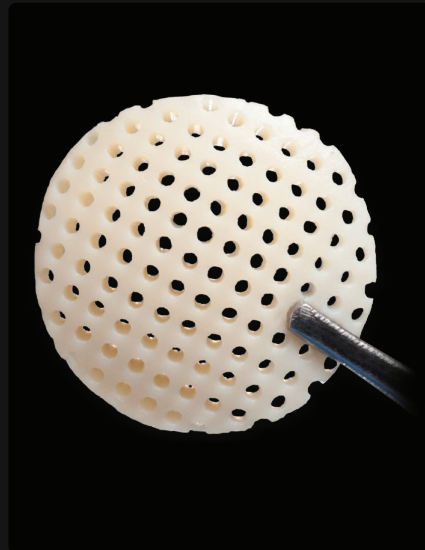
Cartiform® Allograft

DETAILS

- Small to large contained and uncontained lesions with minimal subchondral bone damage
- Precut and shaped osteochondral allografts
- Cryopreserved with viable cells
- Flexible and trimmable

TECHNIQUE

- Scorer creates vertical walls and correct depth
- Four 2.5 mm PushLock® anchors used at each corner of graft, with optional anchor in the center



Autograft OATS® 2.0 Set

DETAILS

- Small, contained lesions with subchondral bone damage
- Diameters of 6 mm-12 mm
- Autologous intact cartilage with subchondral bone

TECHNIQUE

- Donor site can be backfilled using OATS AlloPlug frozen backfill plugs
- OATS 2.0 system includes depth-stop features (8 mm and 13 mm) on both donor and recipient harvesters



Fresh Precut Cores

DETAILS

- Small, contained lesions with subchondral bone damage
- 10 mm, 12 mm, and 16 mm diameters
- Viable intact cartilage allograft with subchondral bone
- No harvesting from patient required

TECHNIQUE

- Recipient site preparation with OATS® 2.0 kit
- Plugs can be downsized using the graft sizing block and OATS 2.0 kit



Fresh Allografts

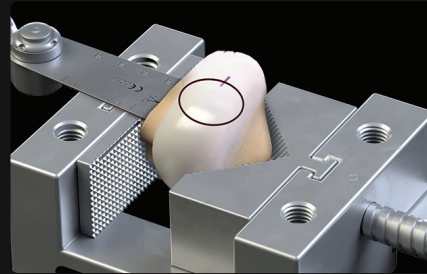
DETAILS

- Large lesions with subchondral bone damage
- Viable intact cartilage allograft with subchondral bone

TECHNIQUE

Allograft OATS Set

- Creates a large plug (diameters of 15 mm, 18 mm, 20 mm, 22.5 mm, 25 mm, 27.5 mm, 30 mm, and 35 mm)
- Depth is dependent on subchondral bone damage



BioPatella™ Set

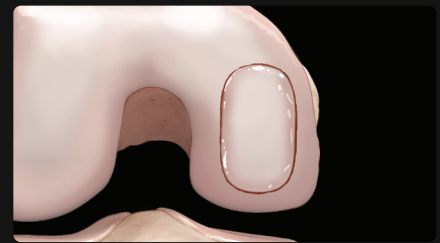
- Creates a large oval plug for oblong patellar defects (20 mm × 30 mm, 25 mm × 35 mm, and 27.5 mm × 37.5 mm)
- Depth is dependent on subchondral bone damage



- Allows for harvesting of large-diameter plugs

BioUni™ Set

- Creates a large oval plug focused on treating elongated lesions (widths: 14 mm, 17 mm, 20 mm; lengths: 30 mm-42 mm)
- Instruments control depth to maximum of 9 mm



Talus Set

- Creates a small plug (diameters: 6 mm, 8 mm, 10 mm, 12 mm, and 15 mm)
- Instruments sized specifically for the talus
- Depth is dependent on subchondral bone damage

